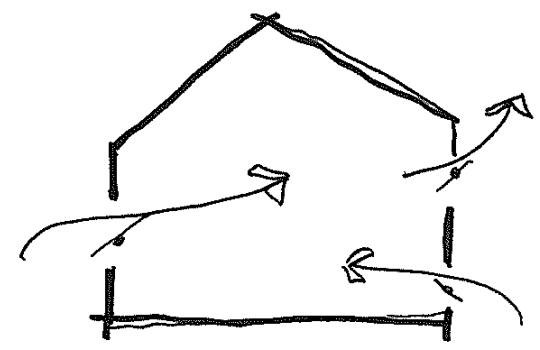
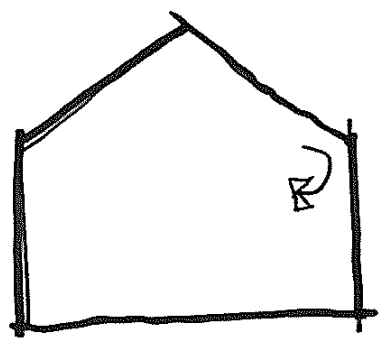


BUILD RIGHT, BUILD TIGHT



SEALED

POROUS

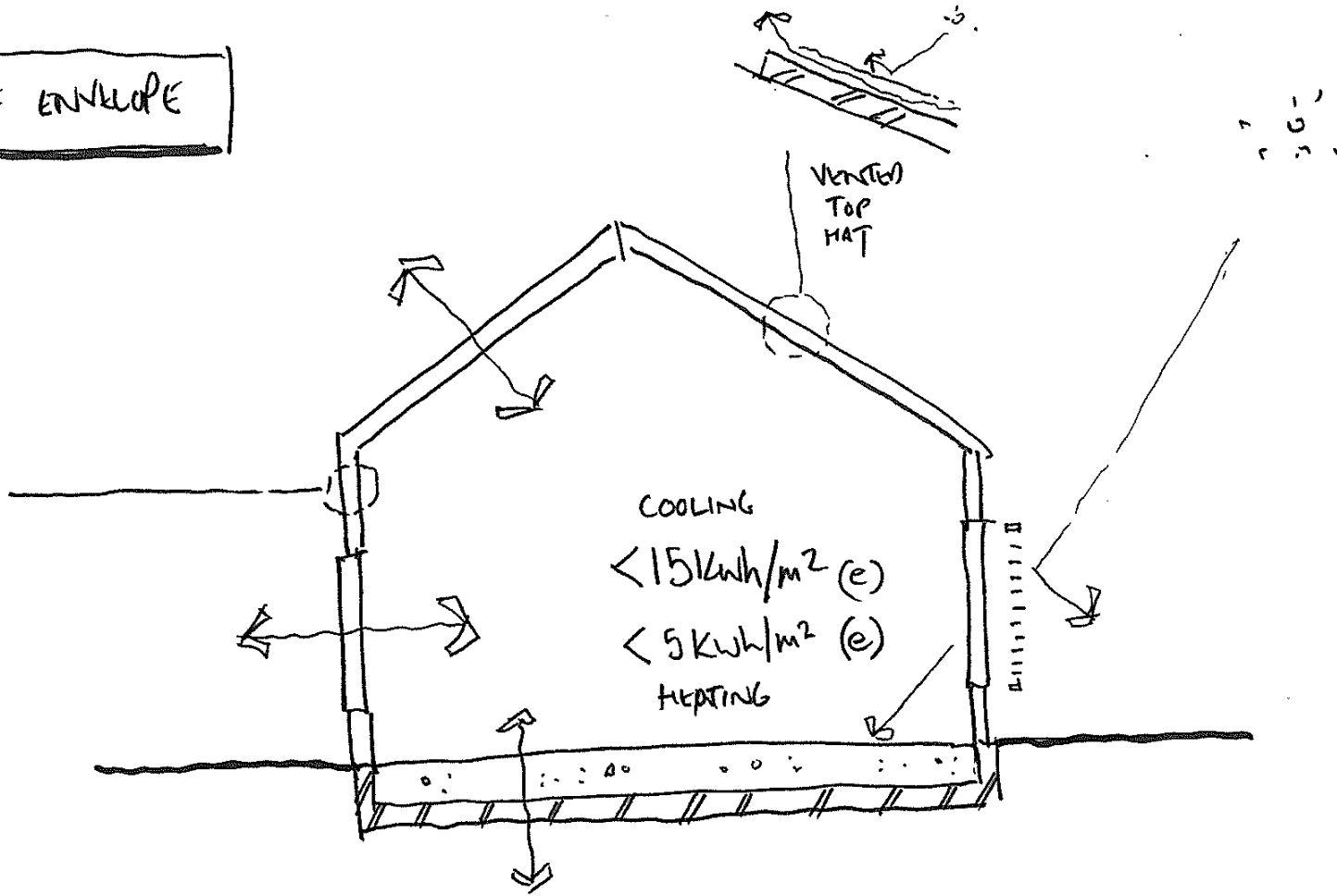
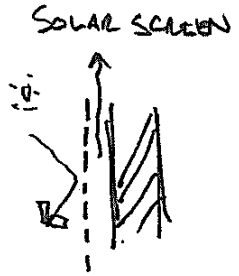
SUMMER  
+  
WINTER

MID SEASONS  
+  
EVENINGS

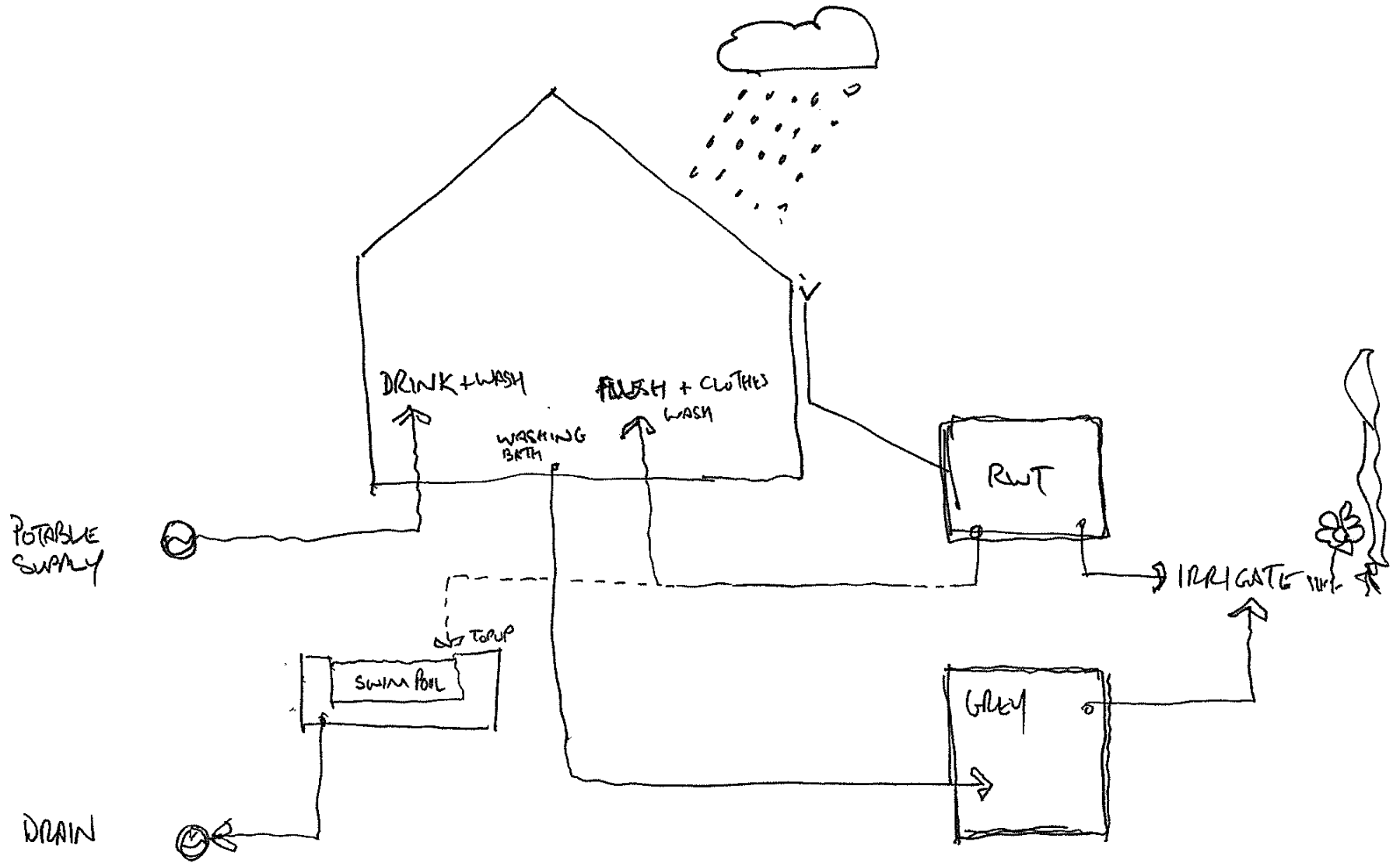
< 0.3 ACH

+8% F/A + HIGH/LOW VENT

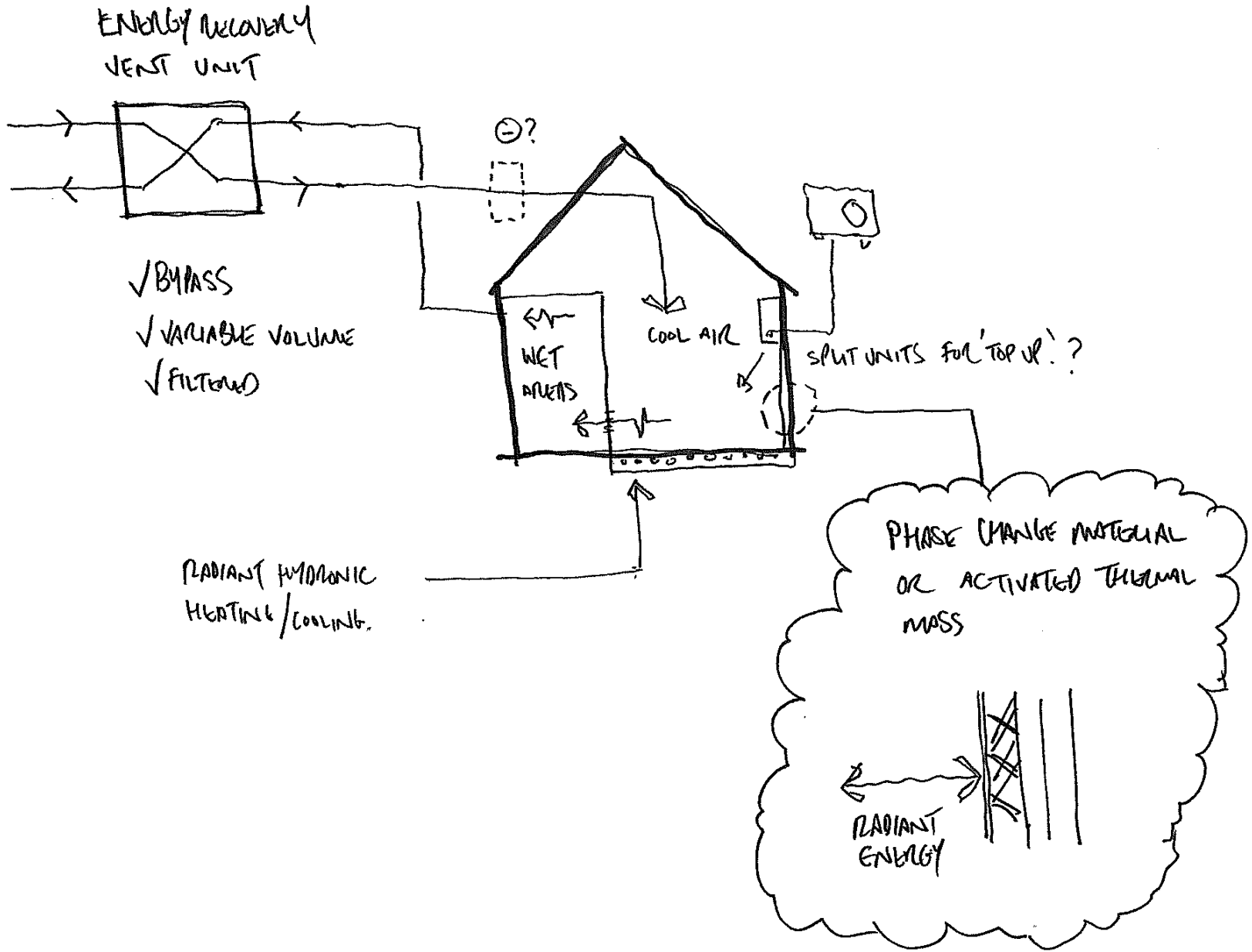
# PERFORMANCE ENVELOPE



WATER

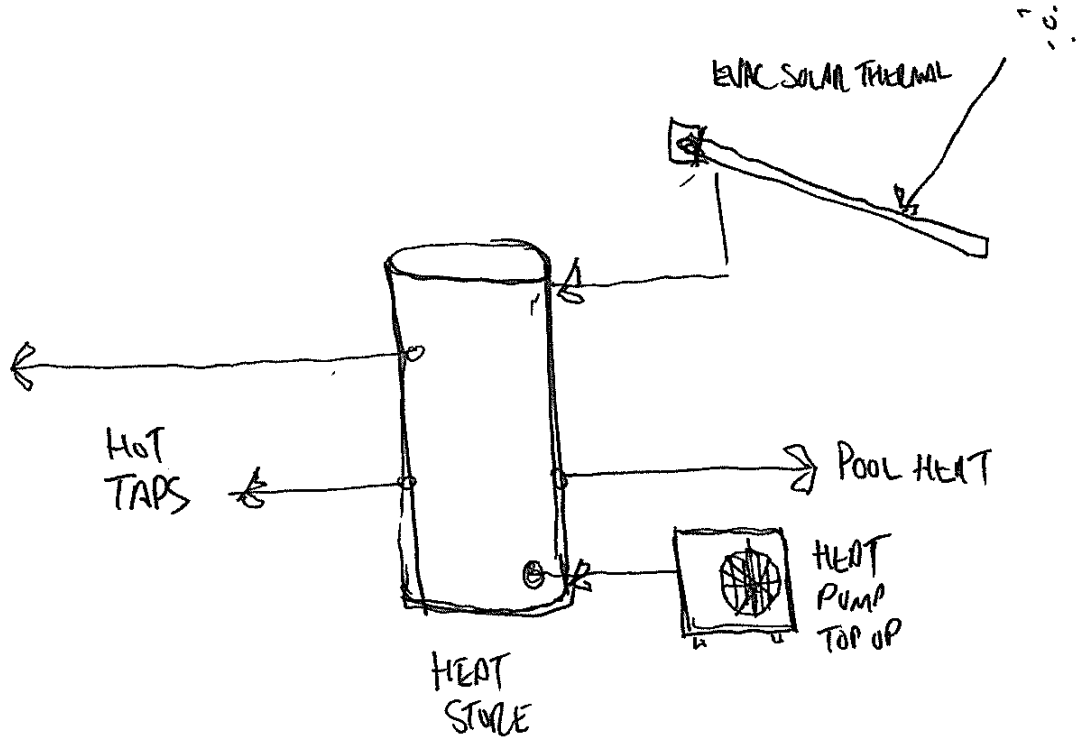


# ACTIVE CLIMATE

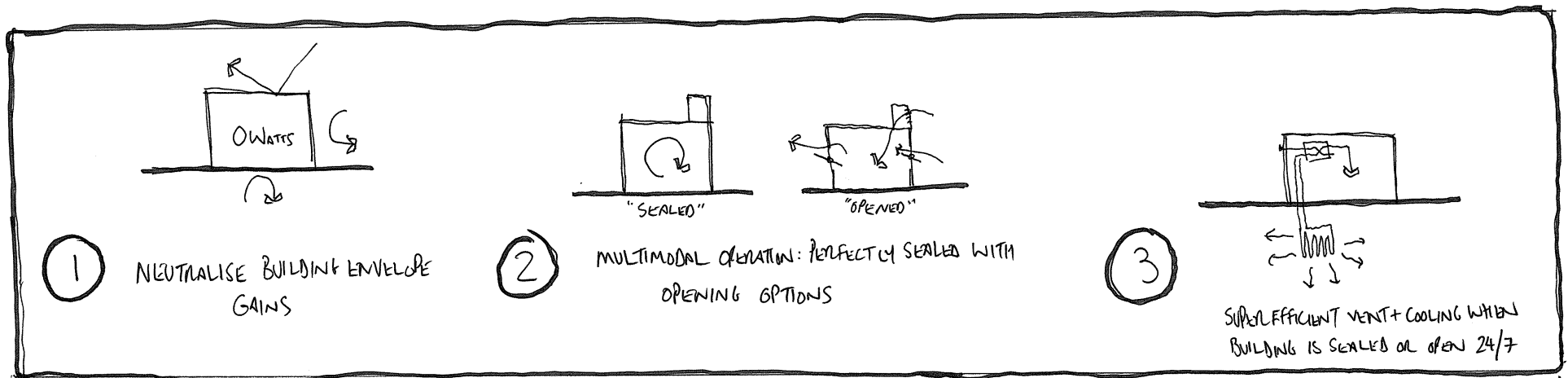
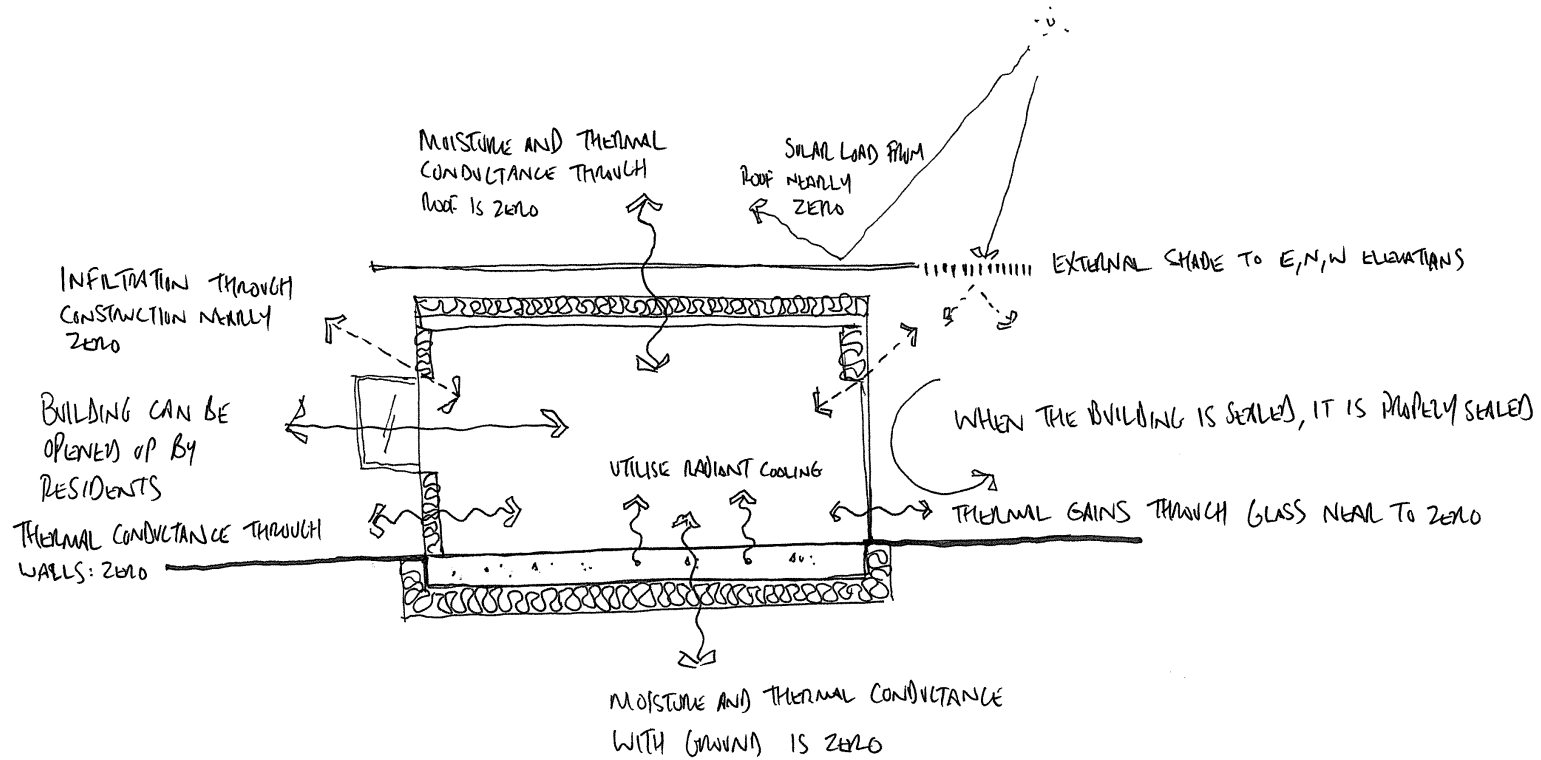


# ENERGY

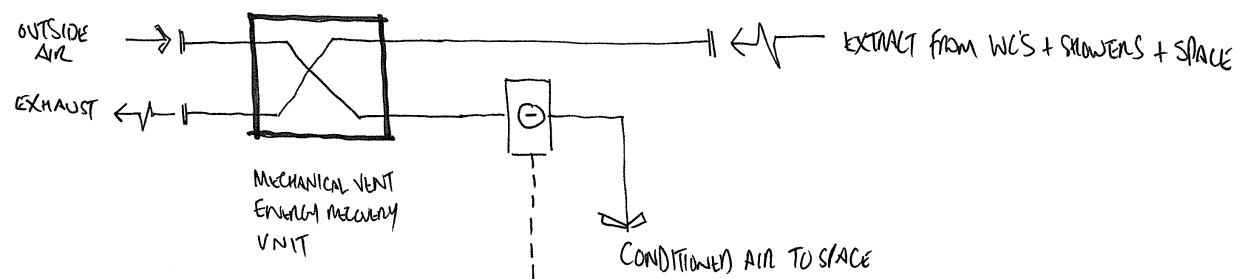
Hydraulic  
HEATING



# Thermal Philosophies



# REMOVING HEAT + MOISTURE FROM INTERNAL SPACES



①

HEATPUMP / SPLIT SYSTEMS

②

EVAPORATIVE SYSTEM: WETPAN, 'COOLERADO', SPRAY etc

③

GROUND EXCHANGE HEATPUMP / DIRECT

④

PHASE CHANGE MATERIAL (TEMPERATURE) COOLING

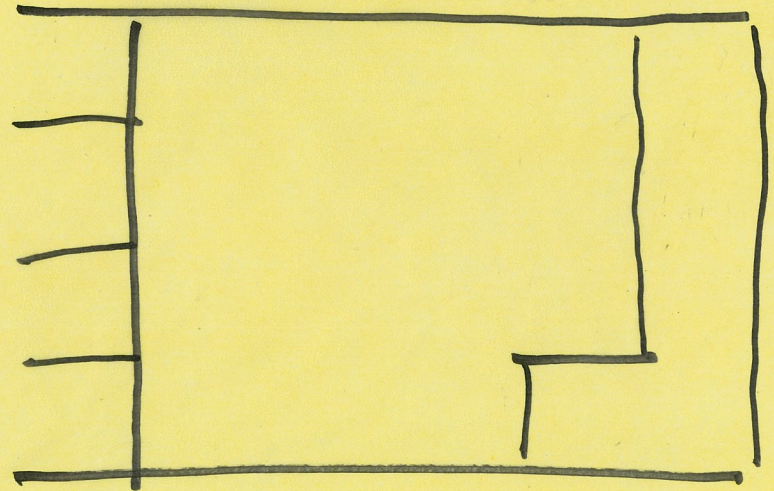
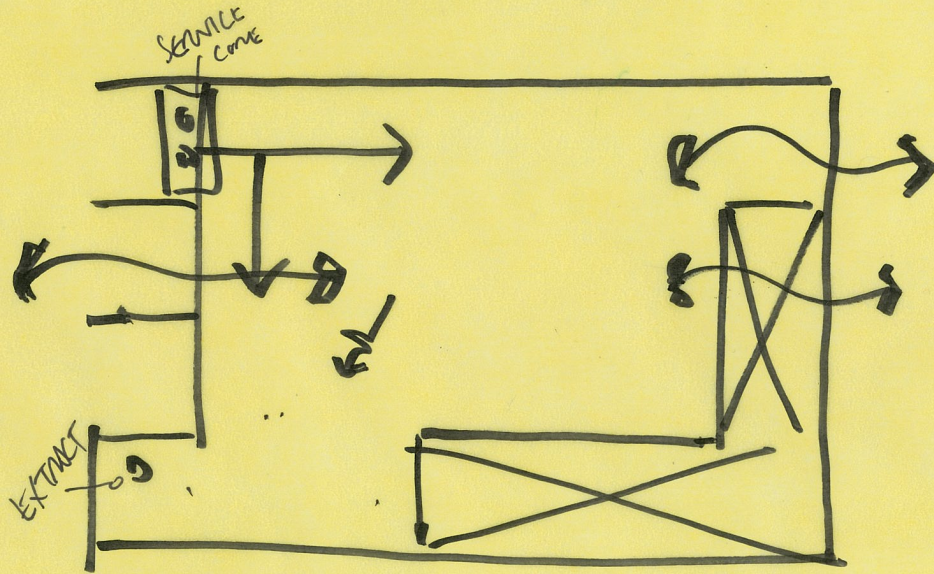
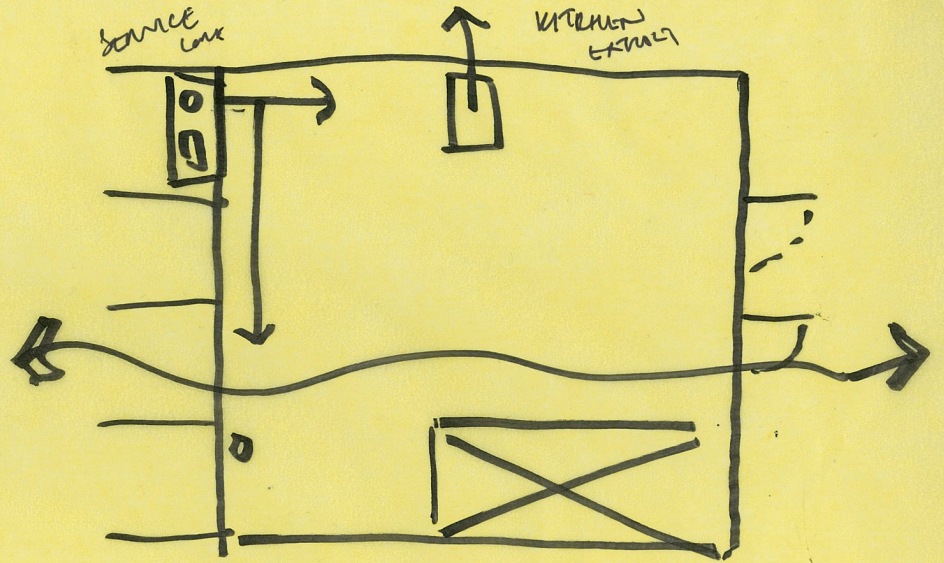
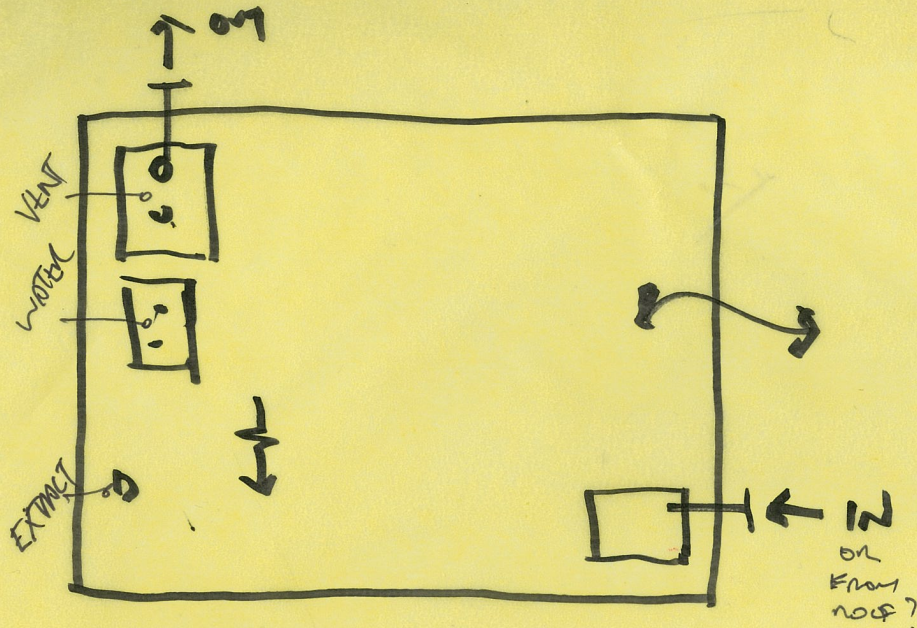
⑤

NIGHT SKY + THERMAL STORE TEMPERATURE COOLING

⑥

MAINS WATER BASED COOLING COIL

⑦



RAIN WATER TANK  
GREY WATER.

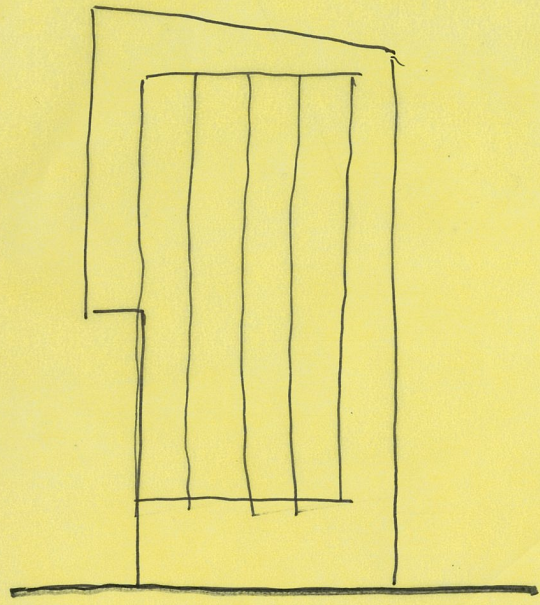
$$24 = 16$$

$$0.025 \text{ m}^3/\text{s}$$

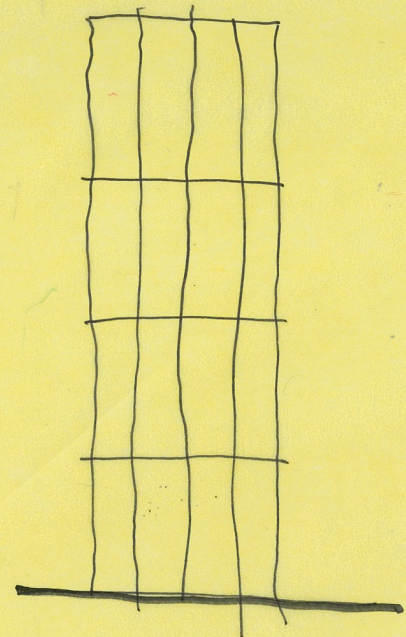
170 x 150.



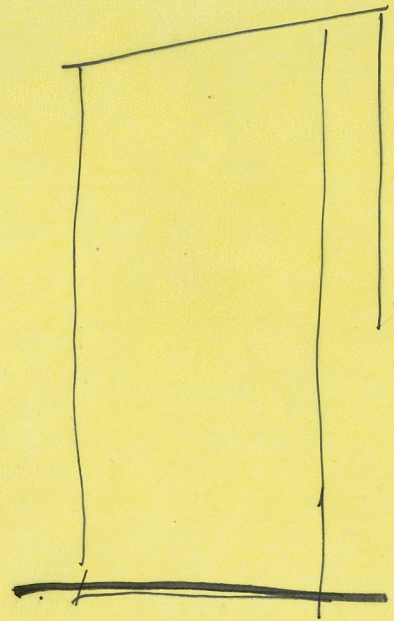
MUR NEUTRALISATION



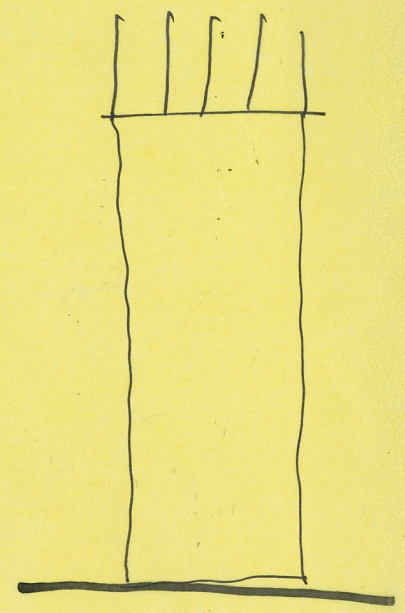
PROTECT



OPEN



BUFFER



OPEN.